

# WHAT'S NEW



# Special instructions support

- You can now add your Special Instructions to the order in the Order Ticket and view or edit it in the Order/Position Details.

The Order Ticket screen displays the following information:


- Header:** 16250 Mobile Demo, 433^2
- Order Summary:** Buy 1 ZCZ24 @433^0 LMT
- SIDE:** Buy (selected), Sell
- INSTRUMENT:** ZCZ24
- PRICE:** 433^0
- QUANTITY:** 1
- ORDER TYPE:** LMT (selected), MKT, STOP, STL
- LIFETIME:** Day (selected), GTC, GTD
- CONTINGENCY:** Off
- SPECIAL INSTRUCTIONS:** (Empty text box)
- SPREAD:** +0^2, 433^0 / 433^2
- Place Order:** (Green button)

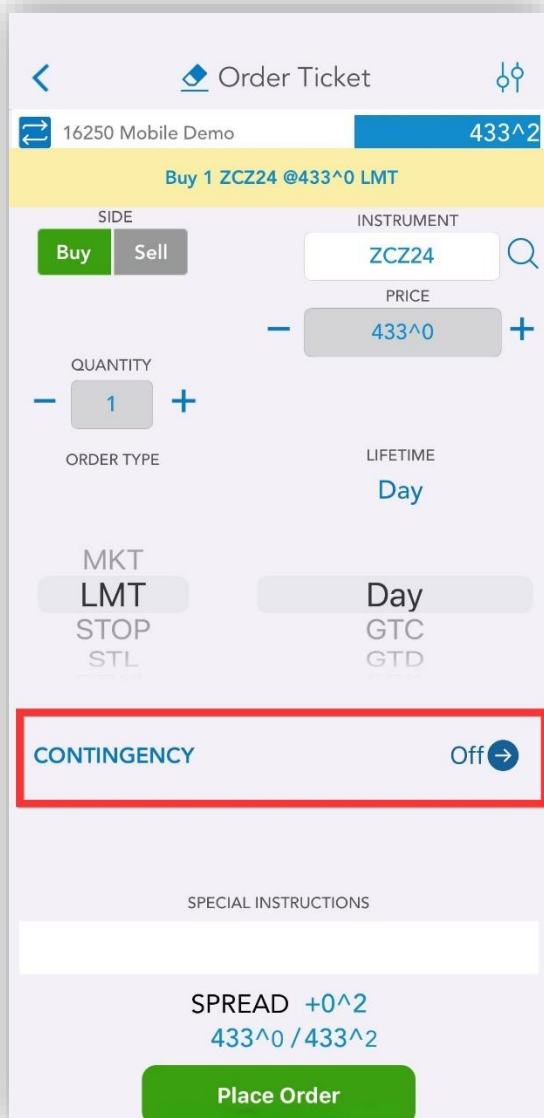
The Order/Position Details screen displays the following information:

- Header:** Order/Position Details
- Navigation:** Offset, Reverse, Chart, Price Ladder
- ORD. #:** 148889
- STATUS:** Filled
- LAST:** 433^2
- Table:**

SIDE	QTY	INSTRUMENT	PRICE
Sold	1	ZCZ24	433^0
- PROFIT/LOSS:** (\$12.50)
- ORDER TIME:** 12:54:16 PM
- FILL TIME:** 12:54:16 PM
- ACTIVE AT:** (Empty)
- ACCOUNT:** 16250
- SALES CODE:** SC-QSTME
- ENTERED BY:** Test101
- SPECIAL INSTRUCTIONS:**
  - This is a special instruction

# Contingency support

- Timed and Iceberg contingency are supported now in the mobile app.
- You can now place an Iceberg or Timed contingency orders by pressing the button 



Order Ticket

16250 Mobile Demo 433^2

Buy 1 ZCZ24 @433^0 LMT

SIDE: Buy Sell


INSTRUMENT: ZCZ24

PRICE: 433^0

QUANTITY: 1

ORDER TYPE: LMT

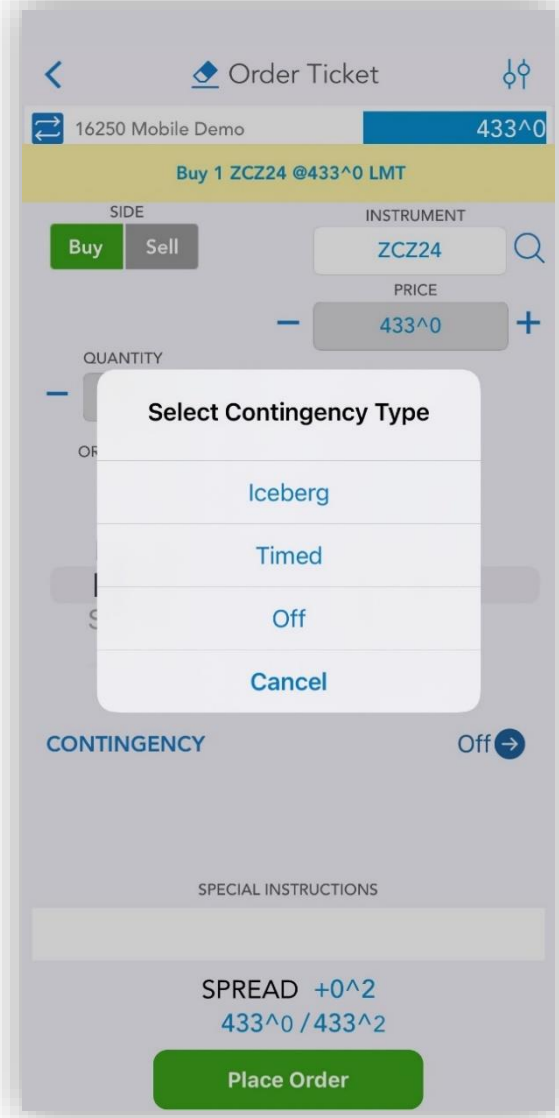
LIFETIME: Day

CONTINGENCY: Off 

SPECIAL INSTRUCTIONS

SPREAD +0^2 433^0 / 433^2

Place Order



Order Ticket

16250 Mobile Demo 433^0

Buy 1 ZCZ24 @433^0 LMT

SIDE: Buy Sell


INSTRUMENT: ZCZ24

PRICE: 433^0

QUANTITY: 1

ORDER TYPE: LMT

LIFETIME: Day

CONTINGENCY: Off 

SPECIAL INSTRUCTIONS

SPREAD +0^2 433^0 / 433^2

Place Order

Select Contingency Type

- Iceberg
- Timed
- Off
- Cancel

- Using the Timed option allows you to place suspended orders which become active at the desired time.
- Iceberg order enables the placement of a large order that is divided into smaller segments.

Order Ticket

16250 Mobile Demo 433^0

Buy 1 ZCZ24 @433^0 LMT(Timed) Activation time 20:54:57 02 Oct 2024

SIDE Buy Sell INSTRUMENT ZCZ24 PRICE 433^0 QUANTITY 1 ORDER TYPE LMT LIFETIME Day

CONTINGENCY Timed →

ACTIVATION TIME 2 Oct 2024 20:54

SPECIAL INSTRUCTIONS

SPREAD +0^2 433^0 / 433^2

Place Order

Order Ticket

16250 Mobile Demo 433^0

Buy 1(1) ZCZ24 @433^0 LMT(Iceberg)

SIDE Buy Sell INSTRUMENT ZCZ24 PRICE 433^0 QUANTITY 1 ORDER TYPE LMT LIFETIME Day

CONTINGENCY Iceberg →

INCREMENTAL QUANTITY 1

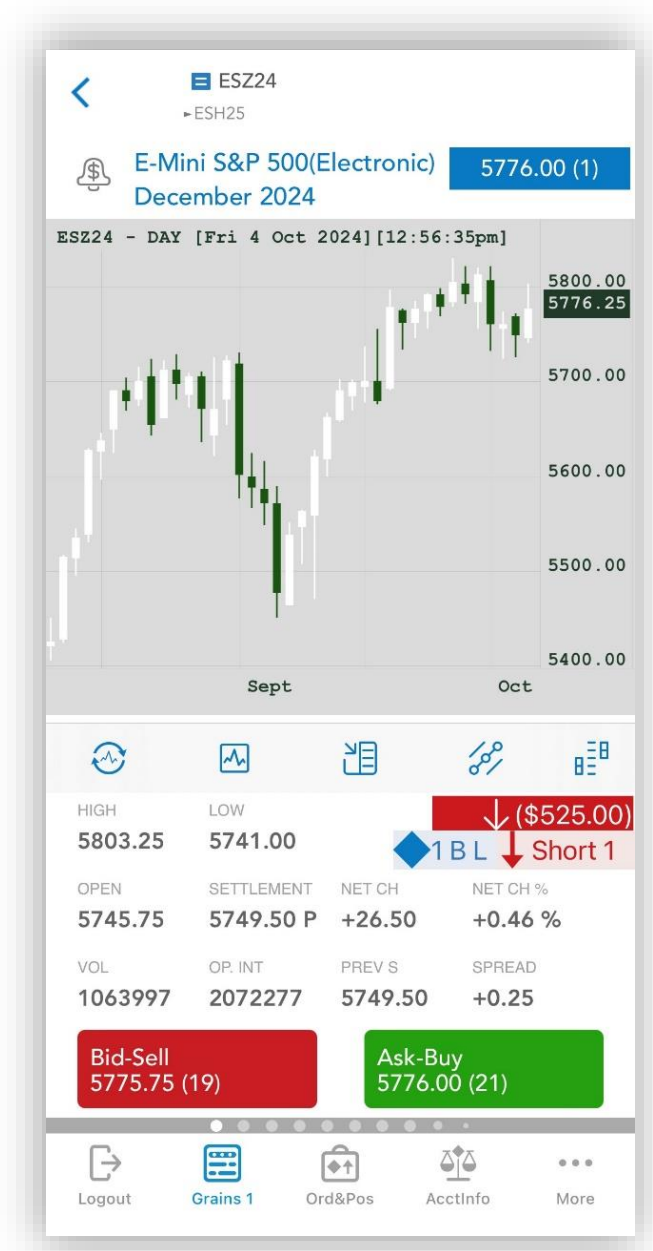
SPECIAL INSTRUCTIONS

SPREAD +0^2 433^0 / 433^2

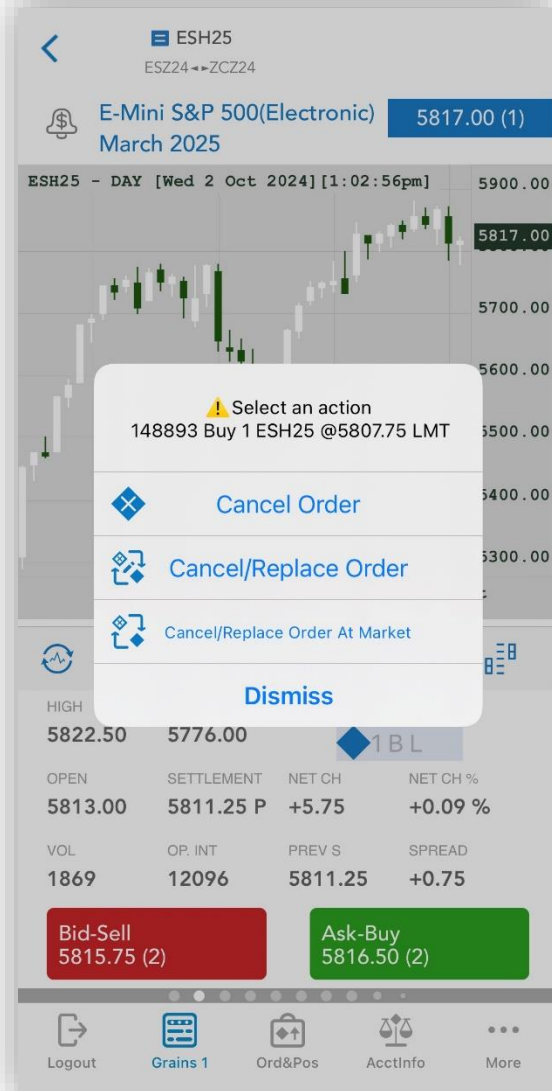
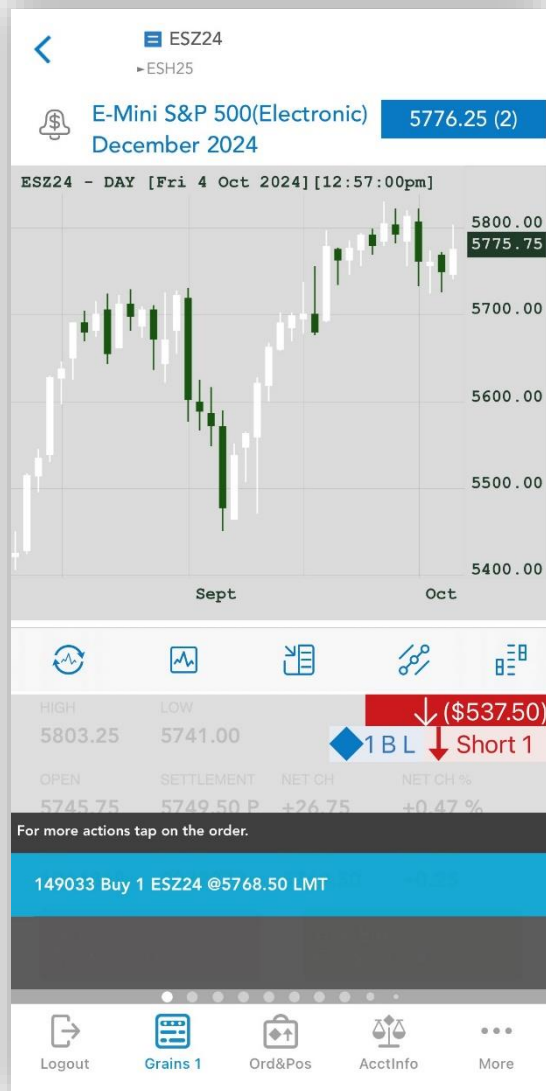
Place Order

# Quote Details

- You can now view all portfolio information related to the selected instrument within the Quote Detail section.




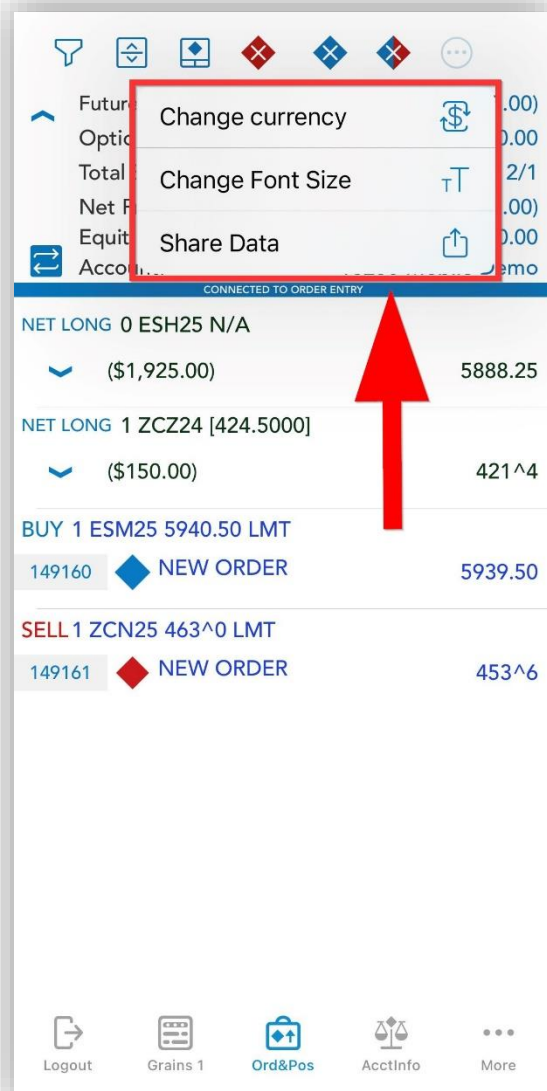
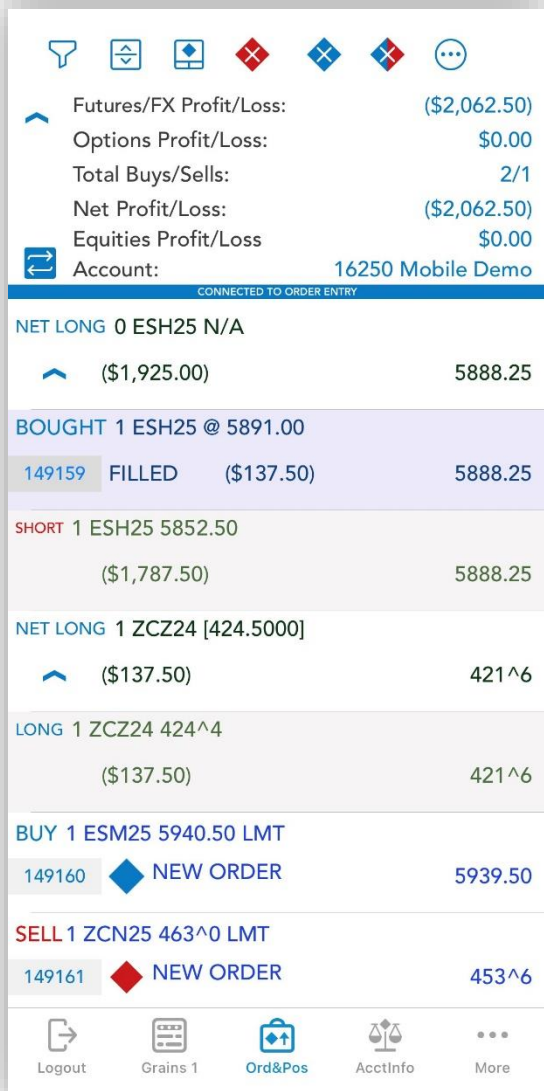
- Order Entry actions are also available when tapping on the order/position.



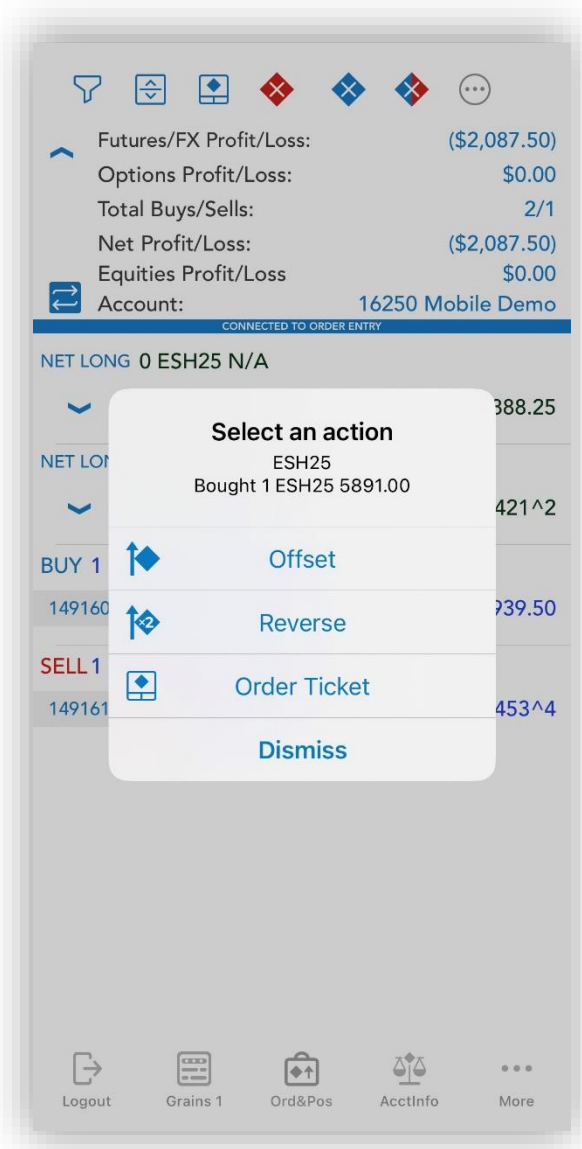
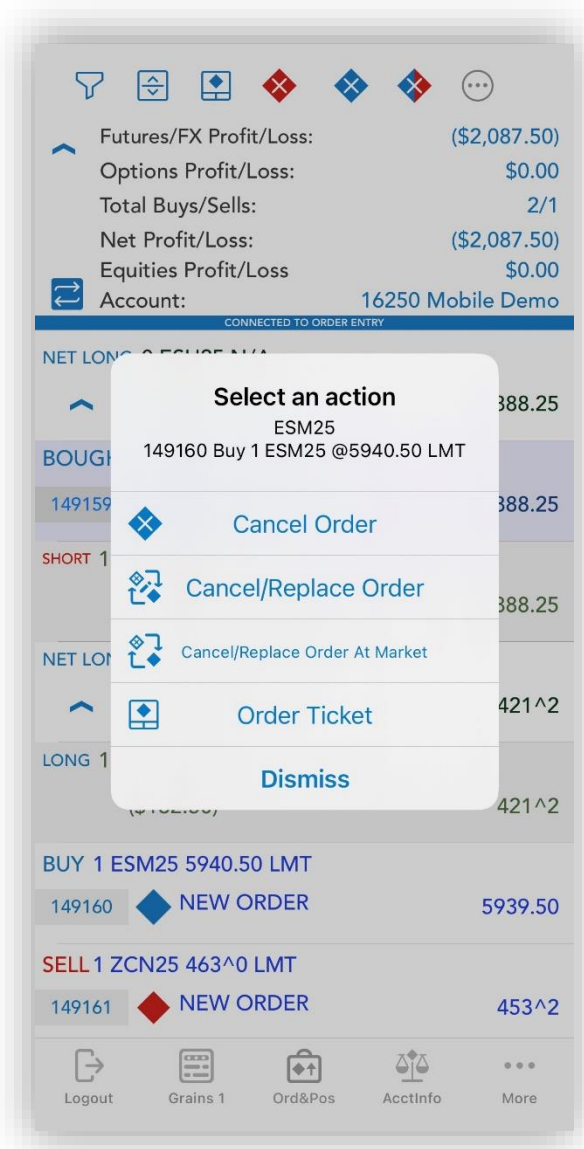


# Orders and Positions

- The order of actions has been adjusted, with the Order Ticket and Currency button having swapped positions.
- The Currency button as well as other actions can be reached by pressing the  button.




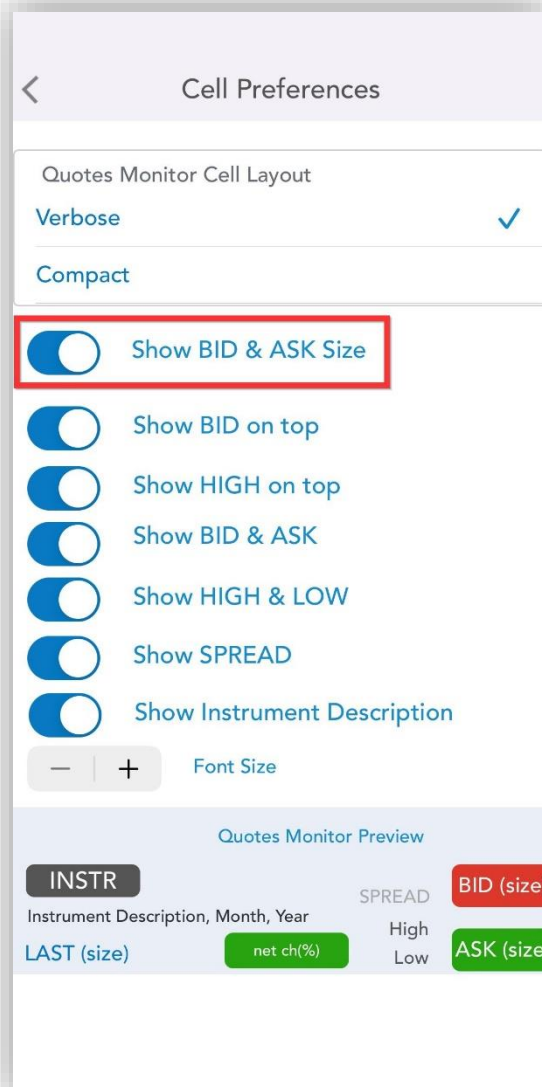
- The design for the Quick Actions menu from the Orders and Positions screen has been updated.
- To bring it up, long tap on an order or position.



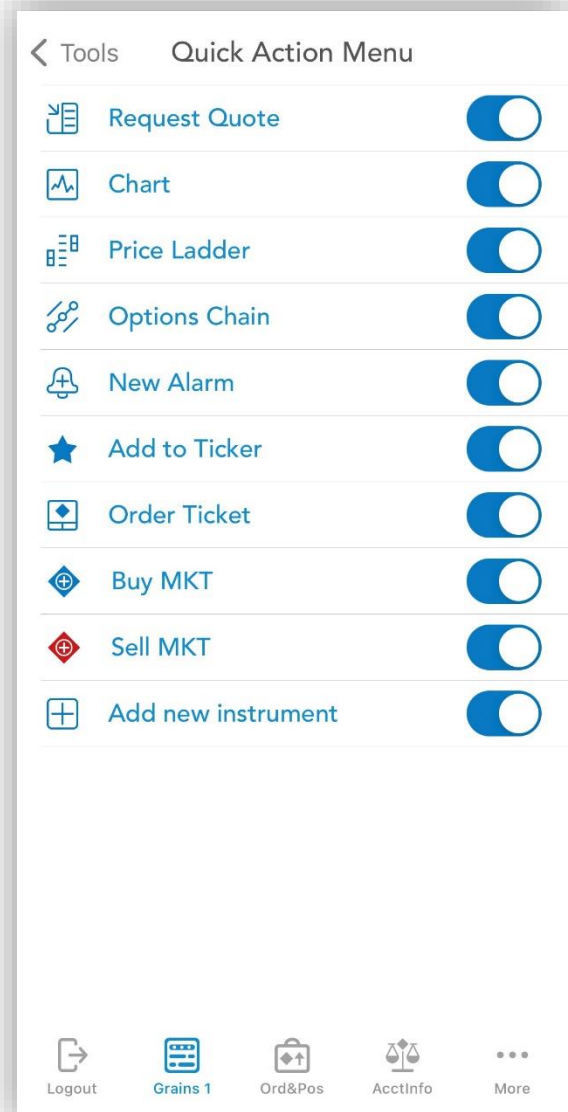
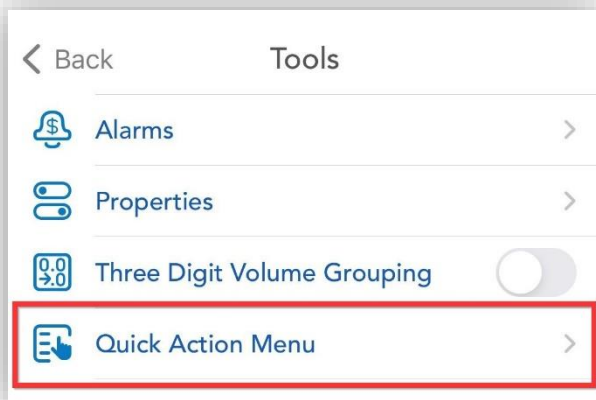


# Quote Monitor Settings

- You can now show or hide the Bid & Ask size from the Quotes Monitor Settings.
- To do so, in the Quotes Monitor screen tap the Settings button  and then go to Properties.

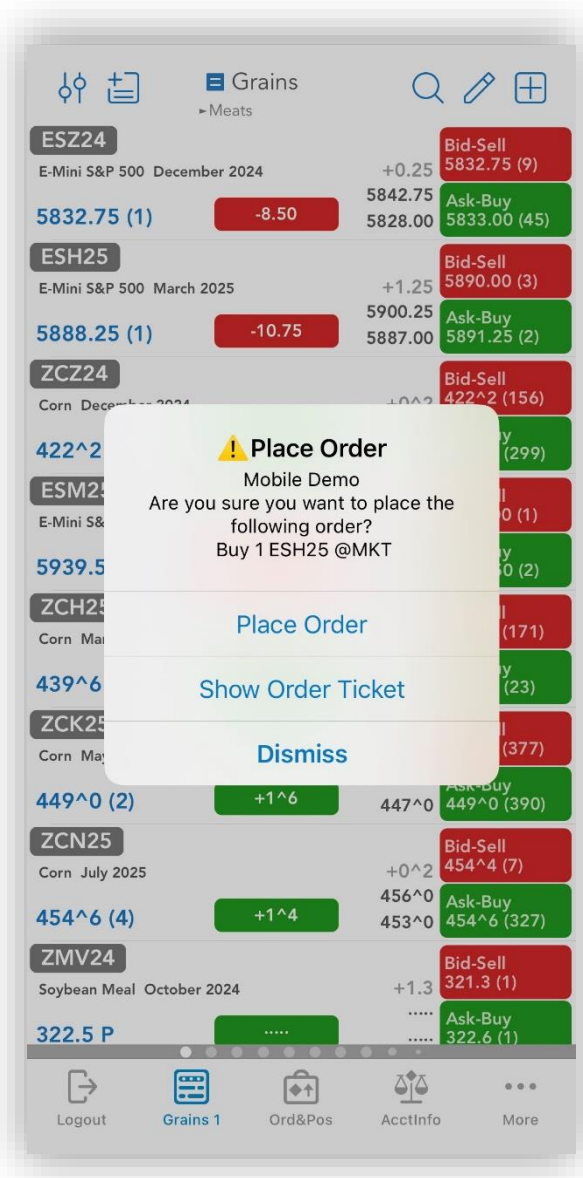
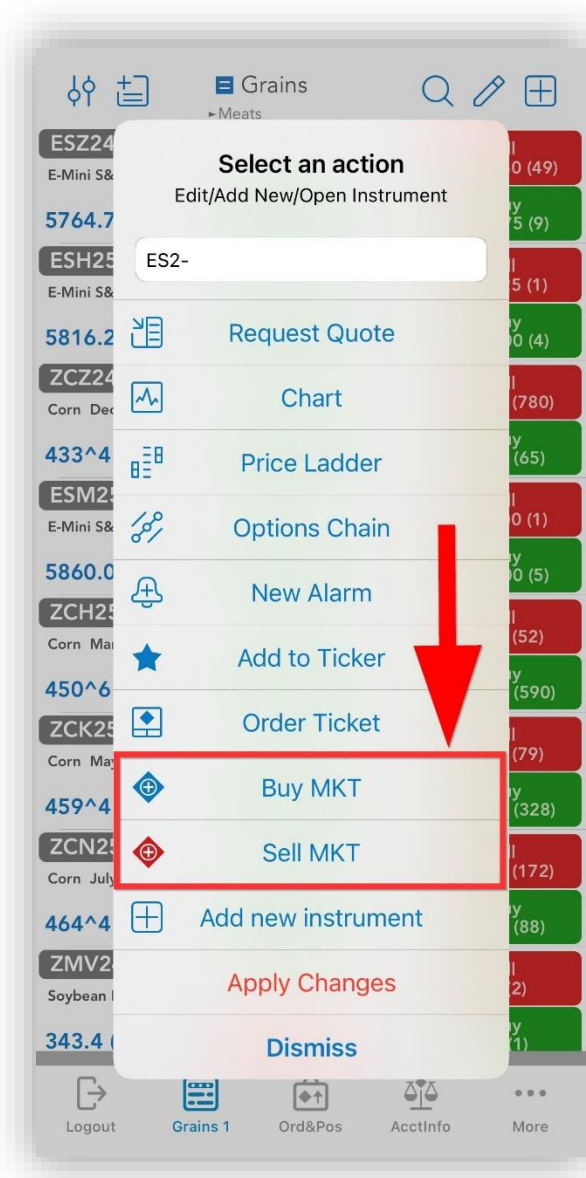


- Now you can customize the Quotes Monitor Quick Action Menu.
- To do so from Quotes Monitor go to Settings and select Quick Action Menu.




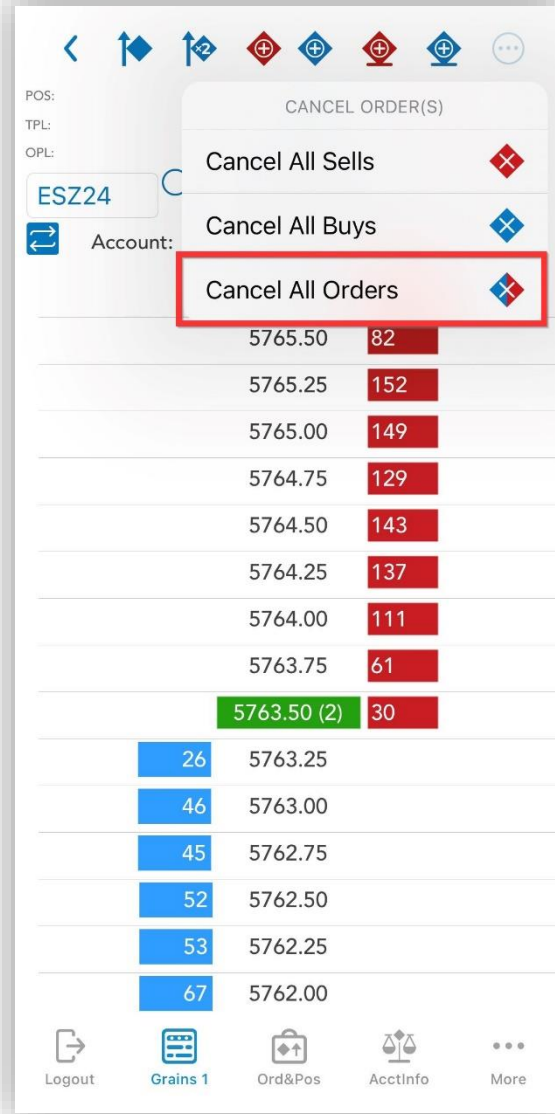
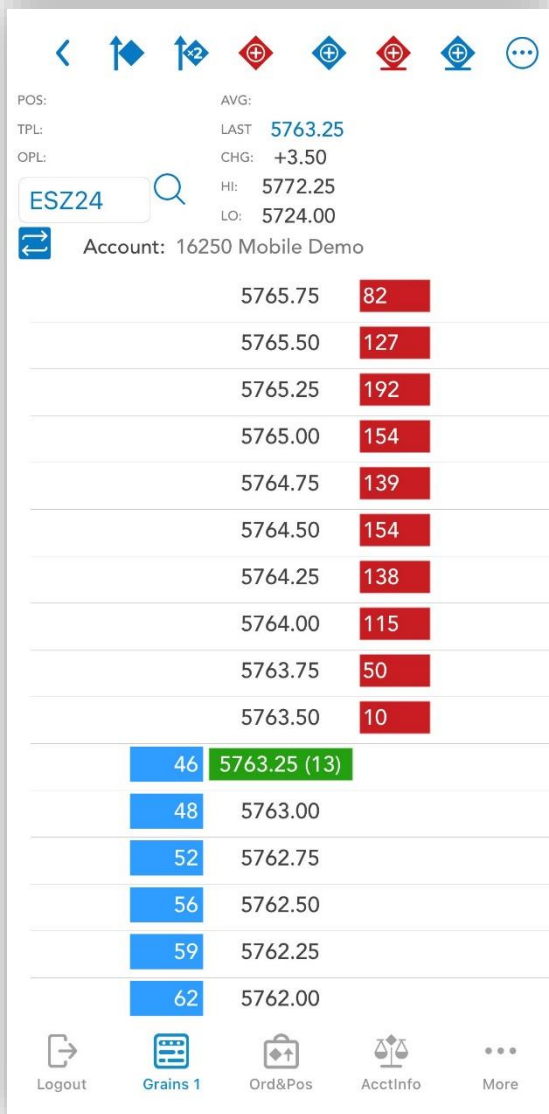
# Quick Action Menu

- You can now place an order at market with the quantity of 1 from the Quick Action Menu.
- If you want to change the quantity, select Show Order Ticket, and edit the quantity to the desired value.



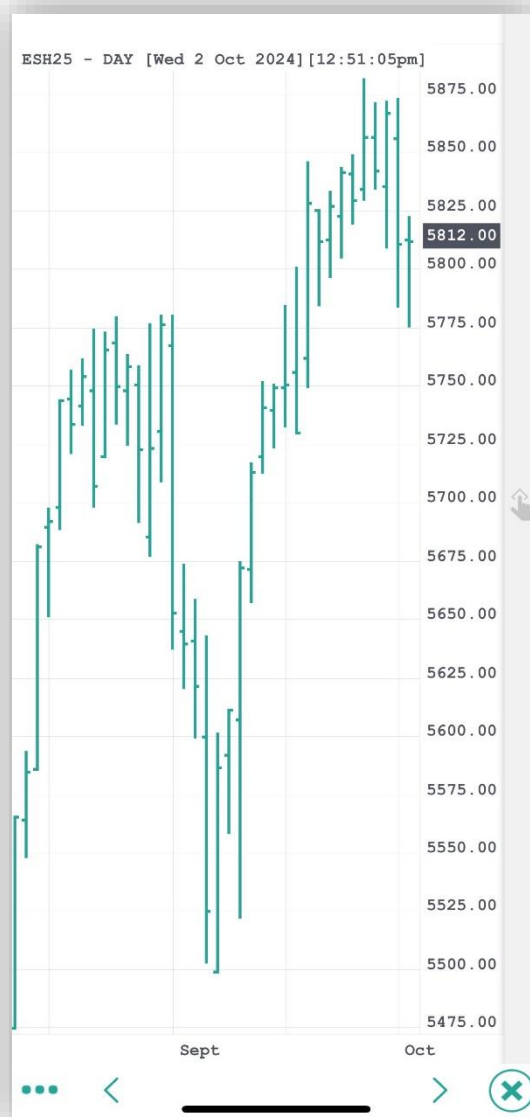
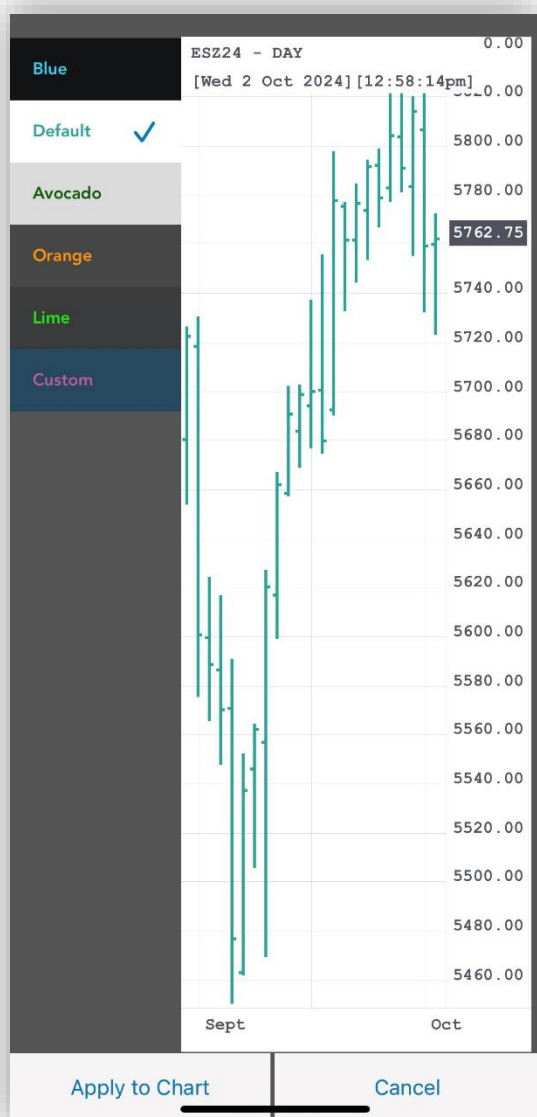
# Price Ladder


- The Price Ladder design has been updated.
- Cancel All Orders functionality has been added to the Price Ladder screen – just tap on the  button and select the desired action.

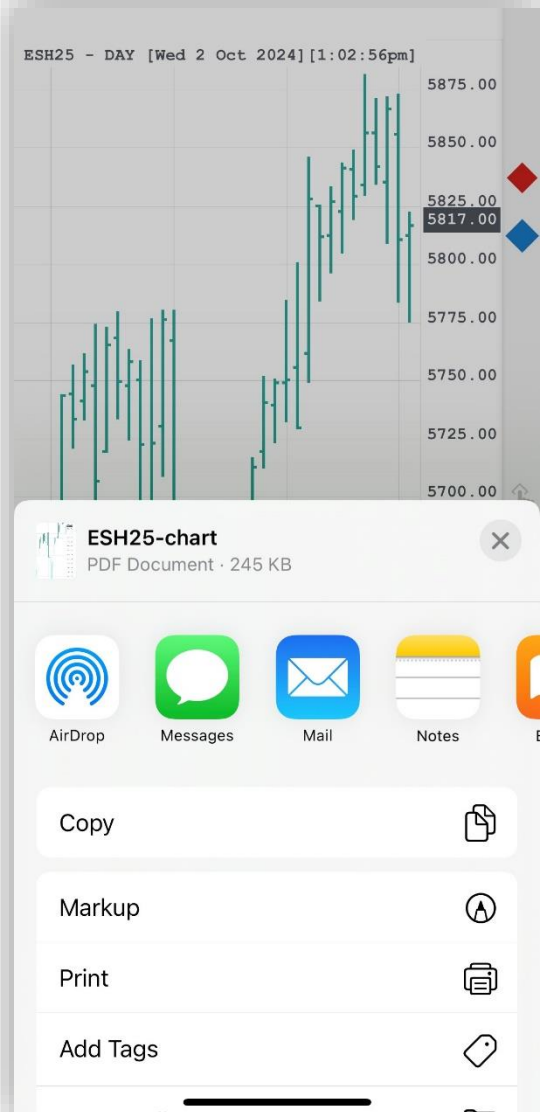


# Chart

- There is a new chart theme available, it is labeled “Default”.
- You can now navigate between charts by pressing the left or right arrow buttons located on the bottom of the Full Screen Chart.




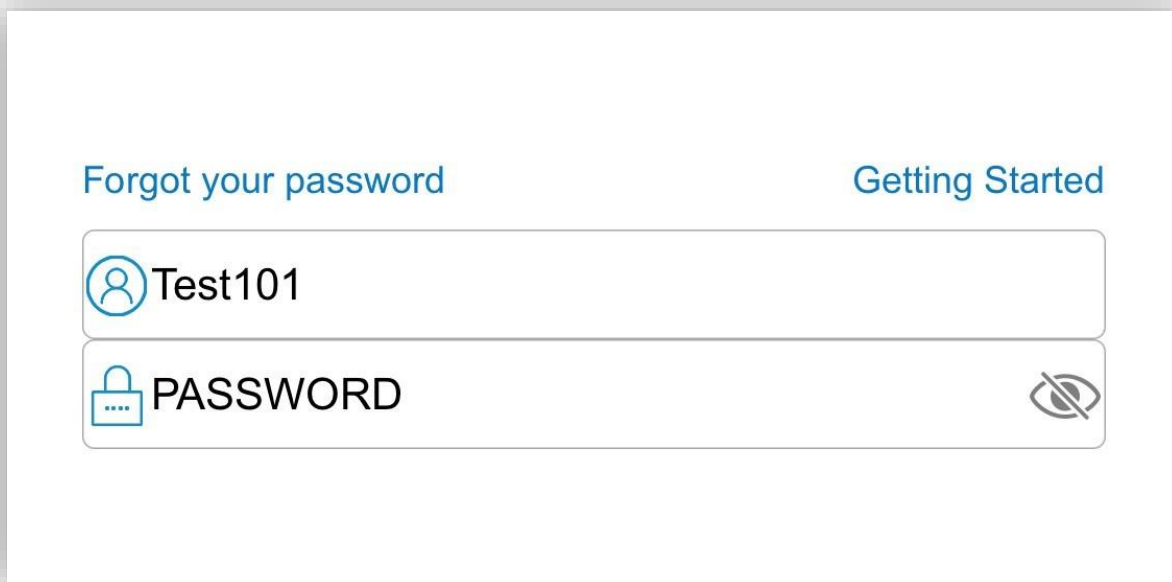
- The Full Screen Chart can now be shared as a PDF pressing the Share button 





# Login Screen

- The password can now temporarily be displayed on the login screen by pressing the Show/Hide button 



A login screen mockup with a white background and a subtle drop shadow. At the top, there are two links: "Forgot your password" on the left and "Getting Started" on the right, both in a blue font. Below these links are two input fields. The first field contains a blue user icon and the text "Test101". The second field contains a blue lock icon, the text "PASSWORD", and a "Show/Hide" button on the right. The button is a grey eye icon with a diagonal line through it, indicating that the password is currently hidden.

# Quotes Monitor & Orders and Positions

- The Quotes Monitor and Orders and Positions icons have a new design.

